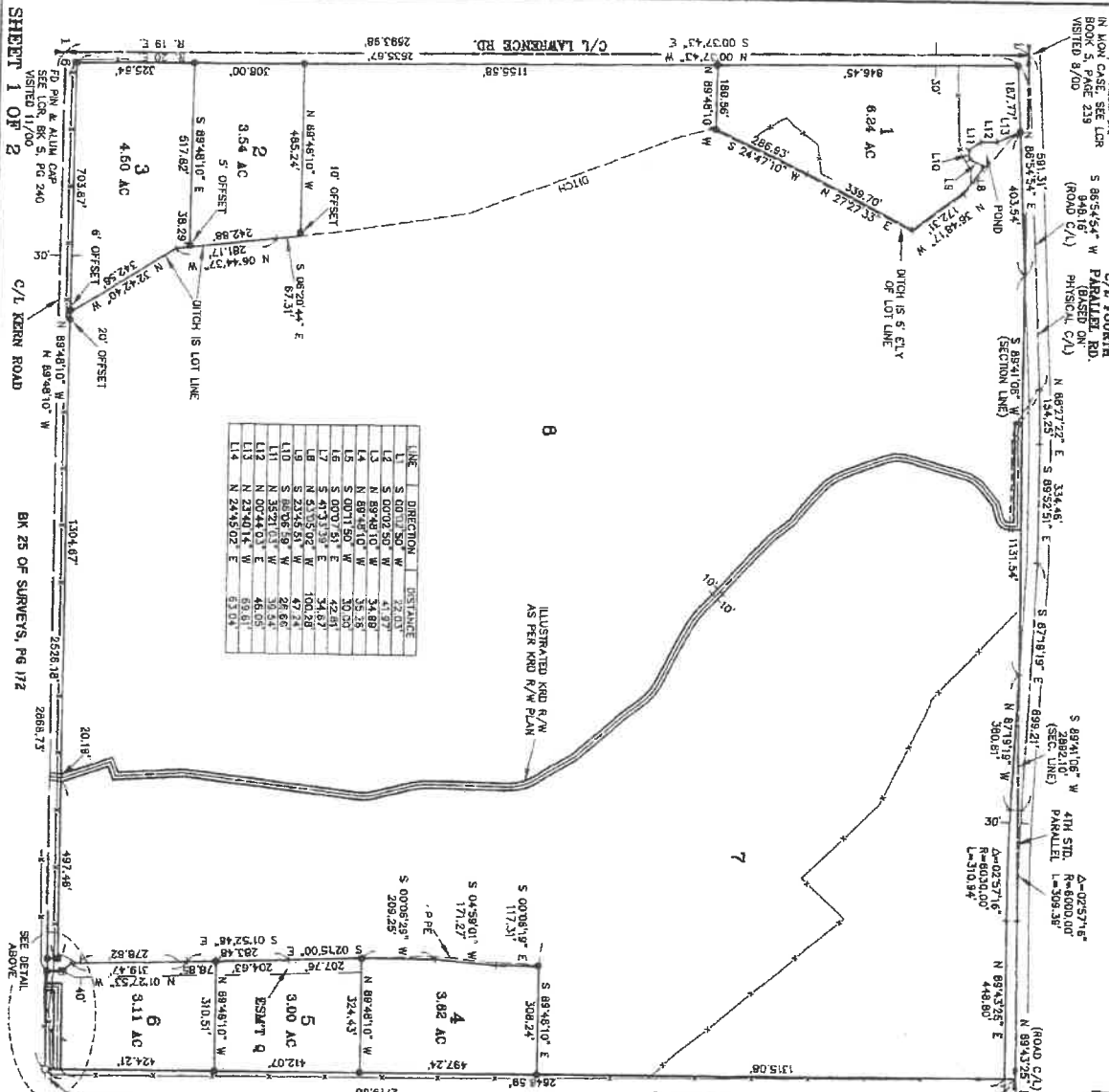
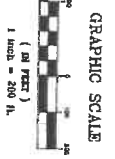
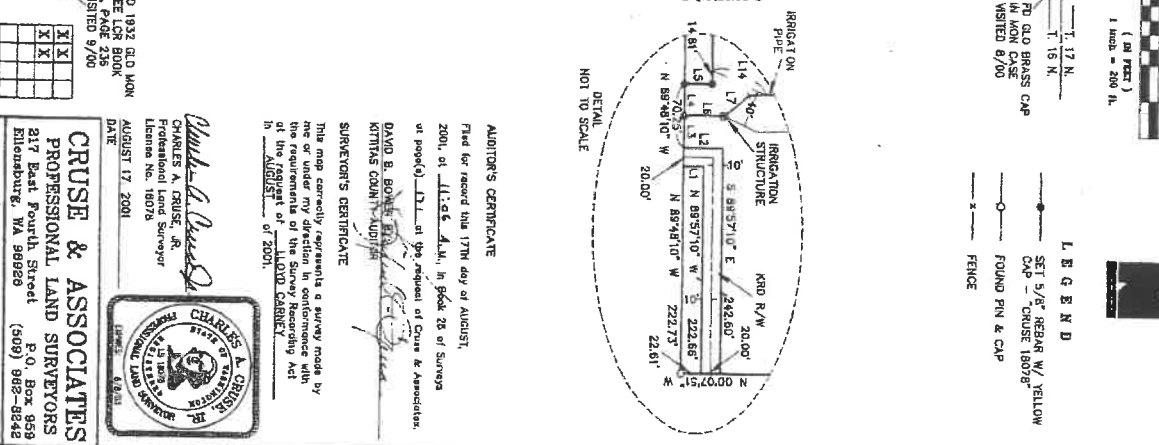


PART OF THE NORTHWEST QUARTER OF SECTION 6,
TOWNSHIP 16 NORTH, RANGE 20 EAST, W.M.



LINE	DIRECTION	DISTANCE
L1	S 00°17'50" W	27.03'
L2	S 00°02'50" W	41.97'
L3	N 89°48'10" W	34.89'
L4	N 89°48'10" W	101.25'
L5	S 00°17'50" W	42.89'
L6	S 00°07'51" E	54.63'
L7	S 47°13'39" E	100.28'
L8	N 89°48'10" W	97.24'
L9	S 00°07'51" E	50.56'
L10	N 89°48'10" W	50.56'
L11	N 00°44'03" E	48.00'
L12	N 23°40'14" W	69.61'
L13	N 24°45'02" E	63.04'
L14	N 24°45'02" E	63.04'



- SET 5/8" NEARBY W/YELLOW CAP - CRUSE 18078
- FOUND PIN & CAP
- FENCE

AUDITOR'S CERTIFICATE
Filed for record this 17th day of August, 2001, at 11:45 A.M., in Book 28 of Surveys at page 49 D-1, at the request of Cruse & Associates.
DAVID B. BOWEN, JR., Auditor
KRITHAS COOK, Auditor

SURVEYOR'S CERTIFICATE
This map correctly represents a survey made by me or under my direction in conformance with the requirements of the Surveying and Mapping Act of 1932 and the Act of 2001.
August 17, 2001

CHARLES A. CRUSE, JR.
Professional Land Surveyor
License No. 18078



CRUSE & ASSOCIATES
PROFESSIONAL LAND SURVEYORS
217 East Fourth Street
Blacksburg, VA 24050
(540) 982-8842

CARNEY PROPERTY

RECEIVED
AUG 27 2019
Krithas Co. CDS
26-171

SHEET 1 OF 2

BK 28 OF SURVEYS, PG 172

FD 1932 OLD MON
SEE L&R BOOK
54-48-49
VISITED 9/00

FD 1932 OLD MON
SEE L&R BOOK
54-48-49
VISITED 9/00

26/171-172
500108170025

